

# The NMC Register Mid-year update

1 April–30 September 2021

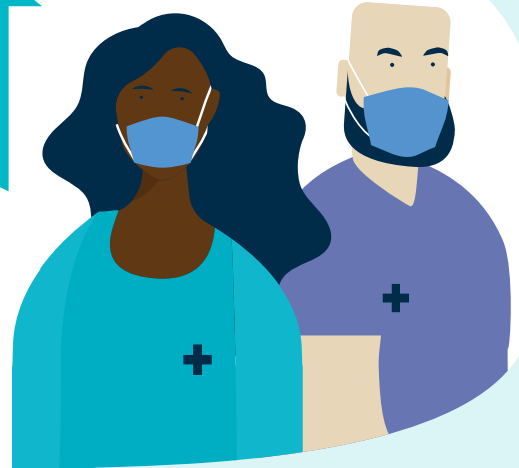


There are almost 745,000 people on our permanent register. This includes nurses and midwives eligible to practise in the UK, and nursing associates eligible to practise in England.

The number of nurses, midwives and nursing associates on our register grew from 731,918 at the beginning of April to 744,929 at the end of September.

In comparison, our register grew by 7,909 people (1.1%) during the same period the previous year, April to September 2020.

13,011  
(1.8%)



The number of nurses on our register grew from 681,527 in April to 692,858 in September.

From April to September 2020 the number of nurses grew by 5,949 (0.9%).

11,331  
(1.7%)



The number of midwives on our register increased from 39,070 in April to 39,664 in September.

From April to September 2020 the number of midwives increased by 937 (2.5%).

594  
(1.5%)



The number of dual registrants (people registered as a nurse and midwife) fell from 6,968 in April to 6,898 in September.

From April to September 2020 the number of dual registrants rose by nine (0.1%).

70  
(-1%)



The number of nursing associates grew from 4,353 in April to 5,509 in September.

From April to September 2020 the number of nursing associates rose by 1,014 (59.9%).

1,156  
(26.6%)



This is a high level summary of our data. We have a more detailed version of this data available on our [website](#).

The number of **professionals whose initial registration was in the UK** grew from 609,327 in April to **613,289** in September.

From April to September 2020, the number of registered professionals whose initial registration was in the UK grew by 6,842 (1.1%).

**3,962**  
(0.7%)



The number of **professionals from the European Economic Area (EEA)** on our register fell from 30,331 in April to **29,420** in September.

From April to September 2020, the number of registered professionals from the EEA fell by 490 (-1.6%).

**911**  
(-3%)



The number of **professionals from outside the EEA** increased from 92,260 to **102,220**. There are now **38,558** who trained in **Philippines** and **32,576** who trained in **India**.

From April to September 2020, the number of professionals from outside the EEA grew by 1,557 (1.8%).

**9,960**  
(10.8%)



The number of professionals **aged 56 and above** increased by **3497** (2.3%) to a total of 158,061.

The number of those **aged 21 to 40** grew by **10,935** (3.8%) to a total of 300,684.

The number of people in between, **aged 41 to 55**, fell by **1,508** (-0.5%) to a total of 286,077.

**56+**

**21-40**

**41-55**

Of the 744,929 professionals on our register:

**73.3%** are White    **11.3%** are Asian  
**9.4%** are Black    **1.3%** are mixed race  
**2.4%** preferred not to say    **1.0%** said other  
**1.3%** didn't declare.



**89.2%** of the people on our register identified as **female**, while **10.8%** identified as **male**.

5,383 (**0.7%**) said their **gender does not match their sex at birth**.



The number of nurses in all four fields of practice increased between April and September.

The number of **learning disability nurses** grew slightly from 17,128 to 17,288 (0.9%), and the number of **mental health nurses** increased from 91,226 to 92,107 (1.0%).

There was a slight drop in the number of **specialist community public health nurses** (SCPHN) on our register, falling from 30,426 in April to 30,241 in September (-0.6%).

The combined number of all the community **specialist practice qualifications** (SPQ) fell from 19,439 in April to 19,409 in September (-0.2%). And the number of prescriber SPQs rose from 93,146 to 96,029 (3.1%). The total number of all the SPQs rose from 127,366 to 129,948 (2.0%).

This is a high level summary of our data. We have a more detailed version of this data available on our [website](#).

Figure 1

**Number of nurses, midwives and nursing associates on the UK permanent register.**

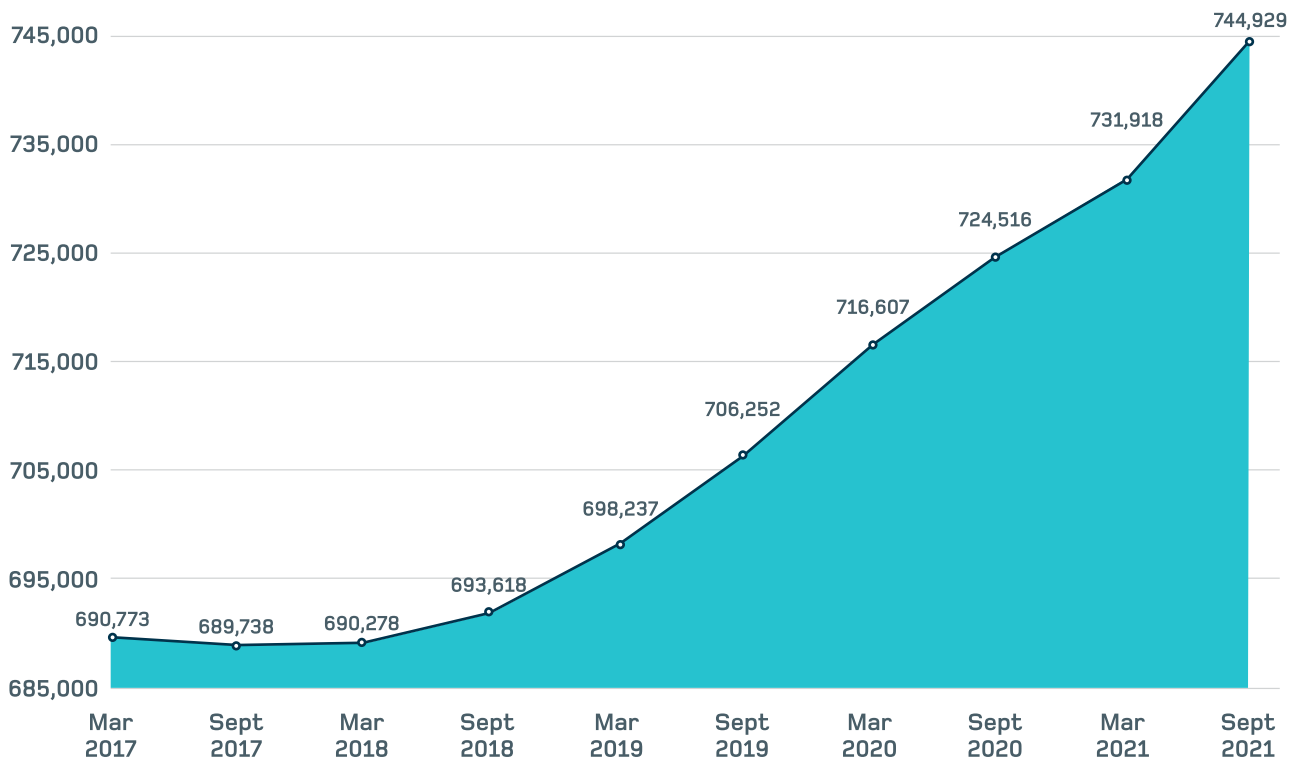
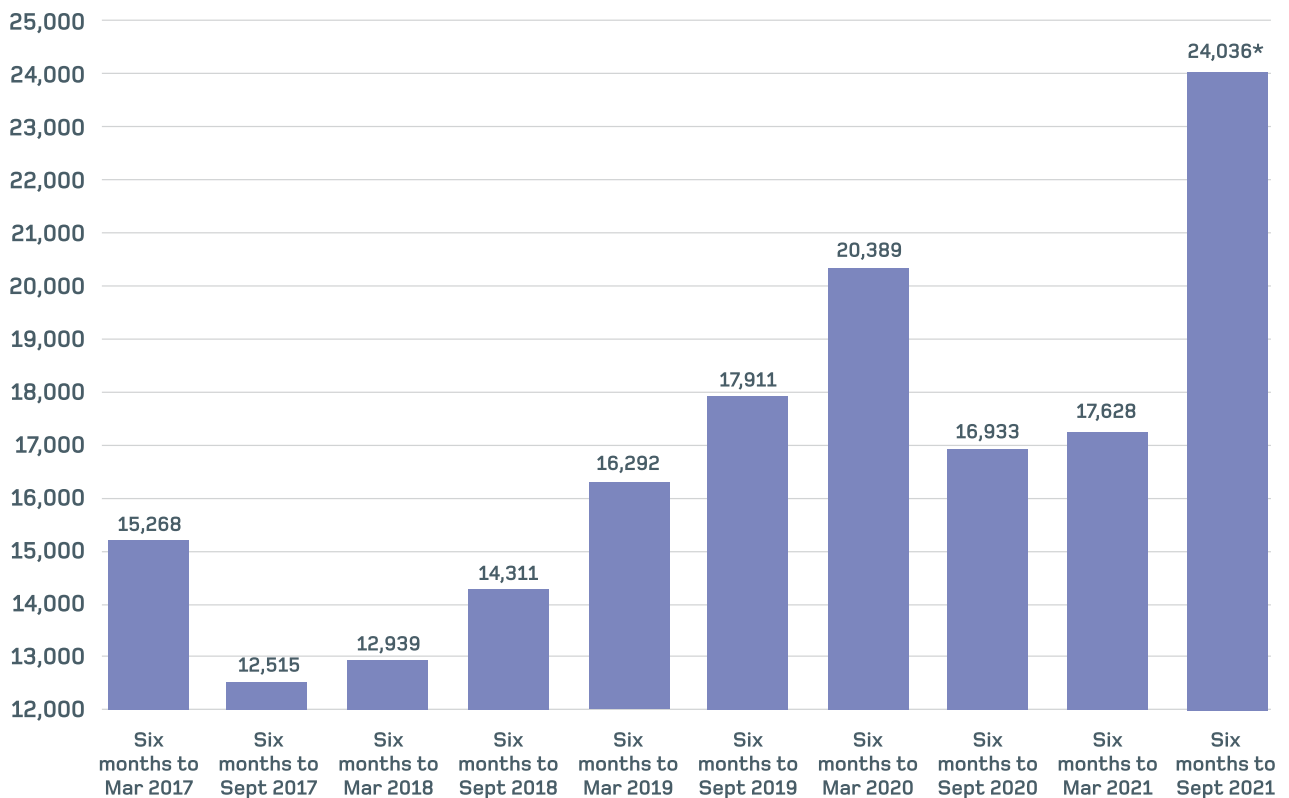


Figure 2

**Number of nurses, midwives and nursing associates joining the UK permanent register for the first time.**



\*Of the 24,036 joiners in the six months to September 2021, 1,361 had been on the Covid-19 temporary register. In the 12 months to March 2021, 3,880 people left the Covid-19 temporary register to join the permanent register.

Figure 3

**Number of nurses, midwives and nursing associates leaving the UK register.**

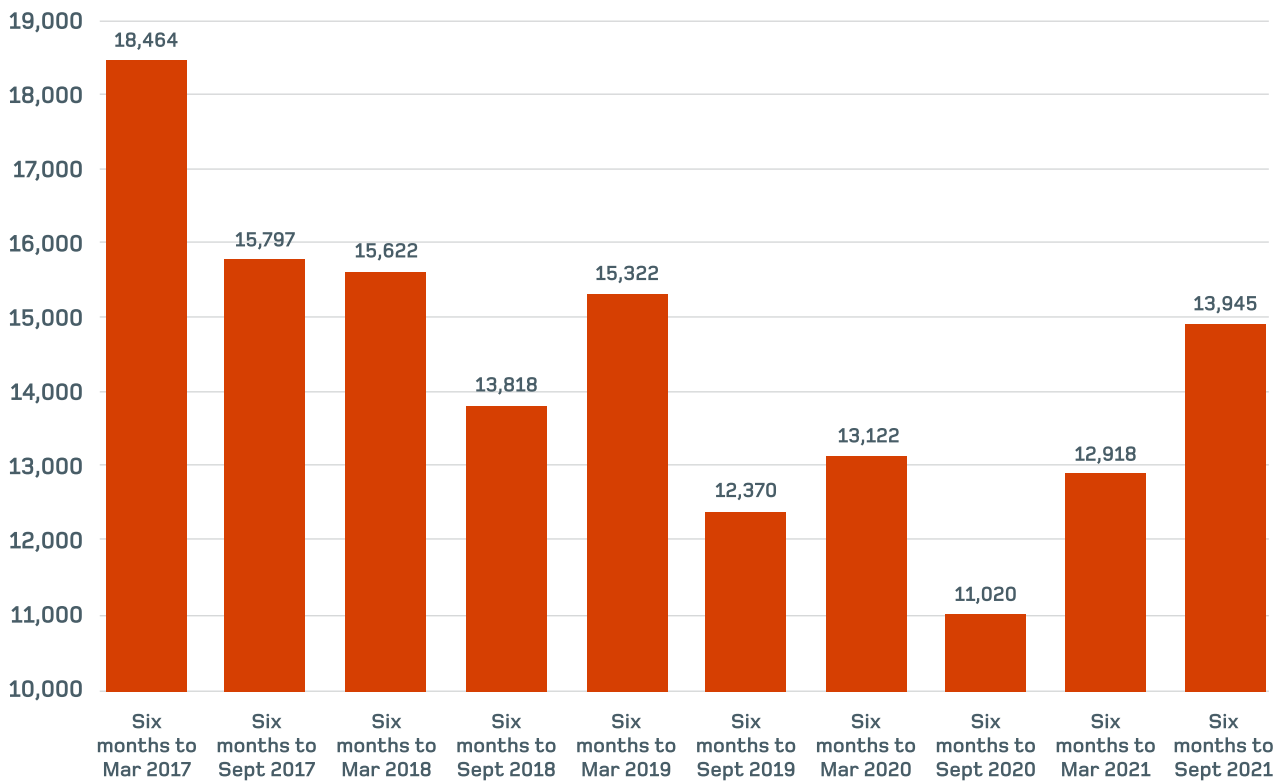


Figure 4

**Number of nurses, midwives and nursing associates from the UK joining the permanent register for the first time**

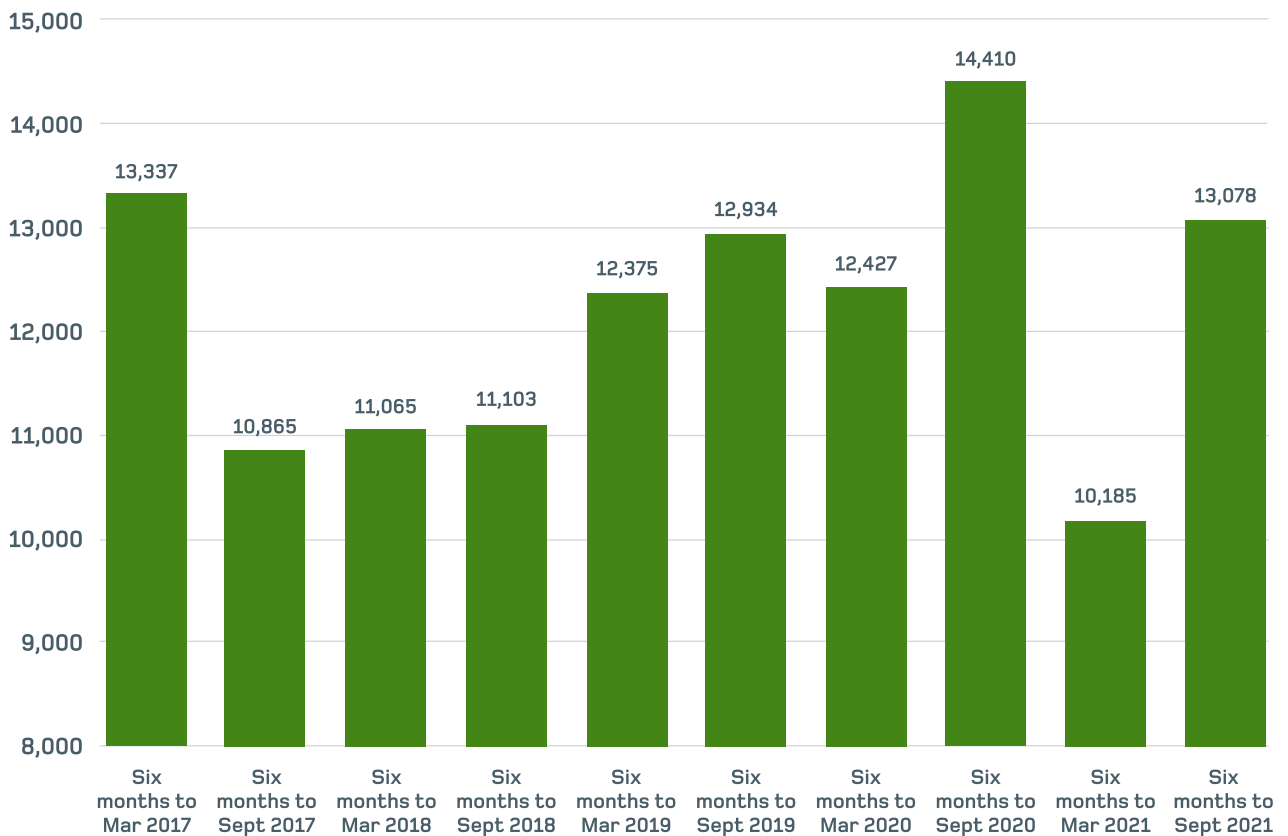


Figure 5

**Number of nurses, midwives and nursing associates from the EEA joining the permanent register for the first time**

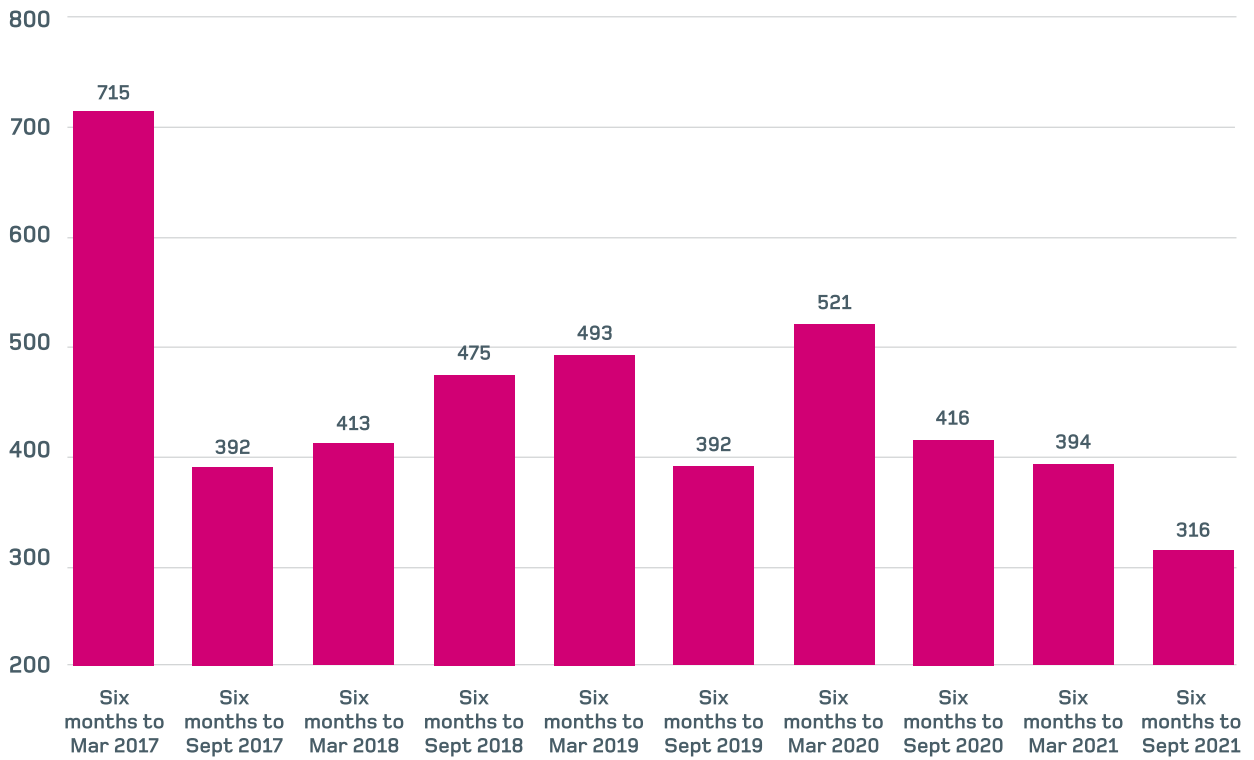
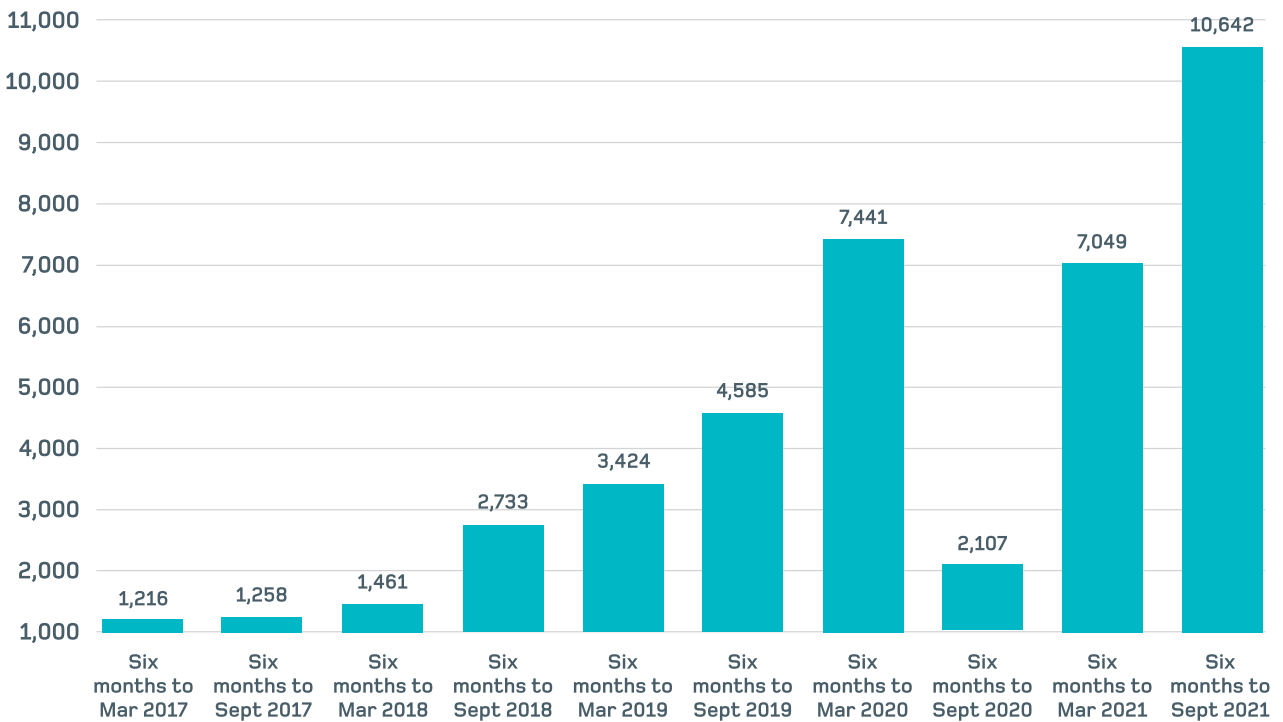


Figure 6

**Number of nurses, midwives and nursing associates from outside the EEA joining the permanent register for the first time**



Joiners' data doesn't include those re-joining the register having previously left. Also, the overall number on the register is from one point in time, whereas the joiners' and leavers' data are the sum of activity over six months. Therefore, these figures won't add up exactly.

# Covid-19 temporary register

## In March 2020 we established a Covid-19 temporary register to support the UK's response to the coronavirus pandemic.

We invited nurses and midwives who had left our permanent register within the last five years to join. We also invited overseas applicants who had completed all parts of their NMC registration process except their OSCE (objective structured clinical examination).

The data below is taken at 30 September 2021 – the same as the data from our permanent register above in this report. For clarity, data from the Covid-19 temporary register is not included in figures 1–6 above.

**Table 1**

### Total people on the Covid-19 temporary register by registration type.

| 31 September 2021 |               |
|-------------------|---------------|
| Nurse             | 13,473        |
| Midwife           | 965           |
| Nurse and midwife | 192           |
| <b>Total</b>      | <b>14,630</b> |

Between April and September, 1,361 people left the Covid-19 temporary register to join the permanent register.

**Table 2**

### Total people on the Covid-19 temporary register by country of initial registration.

|                   | England       | N Ireland  | Scotland     | Wales      | EEA        | Non-EEA    | Not yet recorded* | Total         |
|-------------------|---------------|------------|--------------|------------|------------|------------|-------------------|---------------|
| Nurse             | 10,419        | 312        | 1,632        | 542        | 215        | 261        | 92                | <b>13,473</b> |
| Midwife           | 777           | 21         | 100          | 32         | 30         | 5          | 0                 | <b>965</b>    |
| Nurse and midwife | 154           | 5          | 19           | 8          | 4          | 2          | 0                 | <b>192</b>    |
| <b>Total</b>      | <b>11,350</b> | <b>338</b> | <b>1,751</b> | <b>582</b> | <b>249</b> | <b>268</b> | <b>92</b>         | <b>14,630</b> |

\*Those listed as not yet recorded were overseas applicants undergoing full registration at the time who haven't yet reached the point in their submission where data regarding their country of initial registration is mandatory.

**Table 3**  
**Age profile of the Covid-19 temporary register.**

| 30 September 2021 |       |
|-------------------|-------|
| 21–30             | 230   |
| 31–40             | 981   |
| 41–50             | 1,415 |
| 51–55             | 1,017 |
| 56–60             | 3,311 |
| 61–65             | 4,627 |
| 66–70             | 2,718 |
| 71–75             | 302   |
| Over 75           | 29    |

**Table 4**  
**Gender profile of the Covid-19 temporary register.**

|                   | Female | Male  |
|-------------------|--------|-------|
| Nurse             | 11,906 | 1,494 |
| Midwife           | 961    | 4     |
| Nurse and midwife | 192    | 0     |