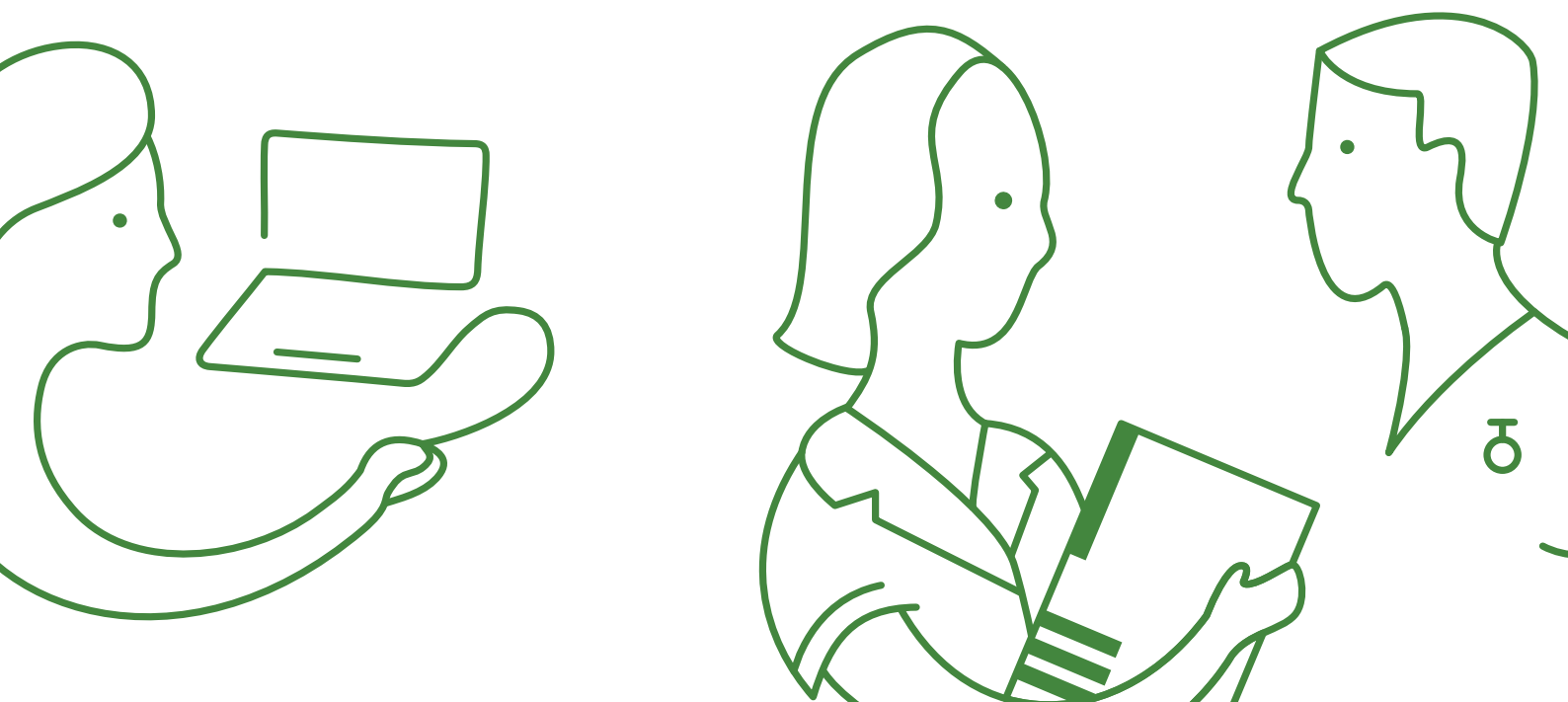


# New return to practice standards

DRAFT – Sept 2018



# Introduction

---

Our current standards<sup>1</sup> for those individuals wishing to rejoin or stay on the register who do not meet our minimum practice hour requirements form part of our [readmission](#) requirements and [revalidation](#) requirements.

We propose removing the current standards related to readmission and return to practice programmes. Our proposed new standards are below.

## 1. Proposed new readmission standards

17. In order to be eligible for readmission to the register you must have:
- completed 750 hours of practice in the previous five years<sup>2</sup>, or
  - completed 450 hours of practice in the previous three years, or
  - completed the equivalent number of registered practice hours while registered with the relevant regulator overseas, or
  - successfully completed an NMC approved return to practice programme<sup>3</sup>, or
  - passed an NMC test of competence for the relevant part of the register

## 2. Proposed new revalidation standards

For the practice hours standards related to revalidation, we propose offering an alternative option of passing an appropriate test of competence. This revised standard would be published in our “How to Revalidate” publication. The revised wording will be as follows.

### Alternative options for those who have not completed minimum practice hours<sup>4</sup>

If you have practised for fewer than the required number of hours in the three year period since your registration was last renewed<sup>5</sup> (or you joined the register) then before the date of your application for renewal of registration you must either:

- a. successfully complete an NMC approved return to practice programme<sup>6</sup> or
- b. pass an NMC test of competence for the relevant part of the register.

---

<sup>1</sup>These standards are set under Article 19(3) of the Nursing and Midwifery Order 2001 (the Order)

<sup>2</sup>Rule 3(4) of the Education, Registration and Registration Appeals Rules 2004.

<sup>3</sup>The draft return to practice programme standards are part of this consultation.

---

<sup>4</sup>Standard set under Article 19(3) of the Order.

<sup>5</sup>You must have practised for a minimum number of hours over the three year period since your registration was last renewed or you joined the register (Article 10(2)(c) of the Order, Rule13(1)(b)(ii) of the Registration Rules).

Registration	Minimum total practice hours required
Nurse	450
Midwife	450
Nurse and SCHPN (Nurse/SCPHN)	450
Midwife and SCHPN (Midwife/SCPHN)	450
Nurse and midwife (including Nurse/SCHPN and Midwife/SCHPN)	900 (to include 450 hours for nursing, 450 hours for midwifery)

<sup>6</sup>The draft return to practice programme standards are part of this consultation