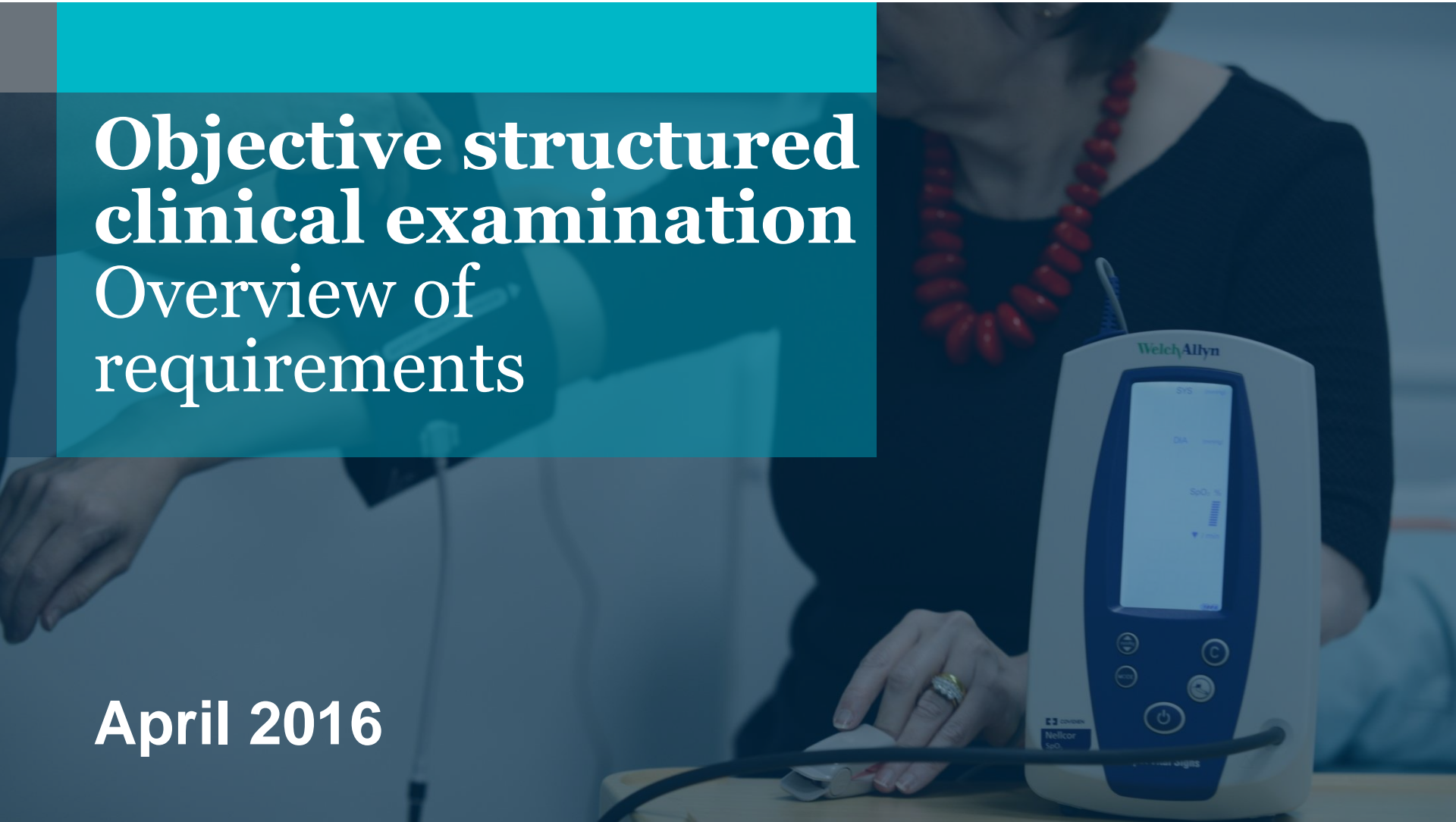


Objective structured clinical examination

Overview of requirements

April 2016



Agenda

Introduction to the Nursing and Midwifery Council

Objective structured clinical examination (OSCE) procurement requirement

Business drivers

Overseas registration

Implementation

Financial and commercial

Next steps

Introduction to the NMC

Nursing and Midwifery Council

The Nursing and Midwifery Council (NMC) regulates nurses and midwives in England, Wales, Scotland and Northern Ireland.

To safeguard the public, we set standards for education to ensure nurses and midwives have the right skills and qualities before they start work in the UK. We manage a register of all nurses and midwives who have met these standards and are eligible for registration to our UK register.

We are governed by our Council which ensures that we comply with the Nursing and Midwifery Order 2001 and the Charities Act 1993.

Trained nurses or midwives wanting to work in the UK must apply for registration with us in order to work in the UK.

NMC overseas registration

The test of competence process consists of two steps:

1. Computer-based multiple choice test (CBT) (test of competence part 1).
2. Objective structured clinical examination (OSCE) (test of competence part 2).

Overseas applications

- The Home Office announcement in October 2015 to add nurses to the shortage skills list highlights a real need to mobilise additional UK test centres as a matter of priority to support an anticipated increase in recruitment activity.
- This development is in addition to a known increase in overseas recruitment, which is increasing as recruitment initiatives for nurses and midwives are run to facilitate NHS and private sector workforce planning to address known shortages.

Test of competence



Test of competence

In 2014 the NMC introduced the test of competence (ToC) for overseas nurses and midwives. The purpose of this test is to ensure safe and effective practise in the UK. All overseas applicants must pass a test of competence to be registered to work in the UK.

The ToC is designed to assess candidates' skills in both theory-based and practical settings. All candidates must be able to demonstrate that their skills, knowledge and behaviours are at the level required to meet the NMC pre-registration nursing or midwifery standards for the UK.

The breadth of skills, knowledge and behaviours that the ToC covers is derived from the NMC testing blueprint which maps the NMC pre-registration nursing and midwifery standards and competencies.

Requirements outline

The NMC currently has an OSCE facility contracted to the University of Northampton.

The NMC is seeking to ensure sufficient capacity of testing to meet growing demands across a broader geographical reach.

The NMC would like to partner with an additional organisation to:

1. Ensure effective delivery of the OSCE (ToC part 2).
2. Develop and review exam content for the ToC, covering both parts 1 and 2.

Requirements must be delivered in-line with NMC standards and under the rules and specification of the ToC.

Procurement requirements

In accordance with the outlined ToC requirements, the procurement for the provision of each falls into the following categories:

Requirements for OSCE, ToC part 2 :

- OSCE facility (lot 1)
- OSCE content development (lot 2)

Requirements for CBT, ToC part 1:

- CBT content development (lot 3)

OSCE facility – lot 1

Delivering the OSCE requires a facility that can simulate a clinical environment.

The OSCE is designed to test the performance of a candidate's clinical skills in a simulated clinical setting which requires:

- An appropriately equipped environment with video equipment set up to record each test (auditing criteria set out in the NMC circular 36/2007).
- Minimum of six assessed OSCE stations (piloted before use); candidates are assessed on a range of skills at each station.

A key attribute is to ensure there is flexibility and the ability to add scale to the provision of facilities. We would therefore like to explore ways in which additional centres can be provided as part of the contract delivery.

Exam content

All exam content is derived from the approved NMC testing blueprint. This exam content is formally reviewed and approved by an external body.

The NMC requires that all exam question writing is produced in accordance with the NMC pre-registration nursing and midwifery standards and competencies that cover essential measures that include:

- Clinical skills delivery
- Communication skills
- Planned care
- Decision making
- Professional and ethical considerations
- Attitudes

OSCE content development – lot 2

- There is a distinct OSCE for each nursing and midwifery pathway.
- Each station has a unique set of 20 marked criterion.
- All scenarios are developed using the NMC test of competence blueprints, which were developed using the entry-level domains, competencies and essential skills clusters from pre-registration nursing and midwifery UK education standards along with the Code (2015).
- All OSCE content needs to be developed following a quality assurance process.
- All OSCE content must be regularly reviewed and refreshed to ensure the validity, reliability, security and quality of the test.

CBT content development – lot 3

- There is a distinct CBT for each nursing and midwifery pathway.
- Each test consists of 120 questions.
- All test questions are developed using the NMC test of competence blueprints, which were developed using the entry-level domains, competencies and essential skills clusters from pre-registration nursing and midwifery UK education standards along with the Code (2015).
- All items and forms need to be developed following a quality assurance process.
- All CBTs must be regularly reviewed and content refreshed to ensure the validity, reliability, security and quality of the test.

Procurement considerations

- Ensuring ongoing sufficient capacity and capability exists.
- Standardisation of exam delivery across all OSCE providers.
- Optimum solution development and partnership approach to fulfilling supply.
- Must have capability of partnering with existing OSCE and CBT providers to ensure consistency of standards and outcomes are maintained.
- Reducing cost and time of delivery utilising knowledge and lessons learned from existing partner and ensuring value for money.

OSCE

- The OSCE exam fee is currently £992.
- Should an applicant fail **part** of the exam on first sitting, they are eligible to re-sit the exam at a reduced fee of £496. However if a candidate fails the entire exam, a full fee must be paid for the re-sit.
- There is a compulsory exclusion period of 10 days between the candidate's first sitting and their re-sit.
- If an applicant fails their re-sit, they cannot sit the OSCE exam again for at least six months.

Indicative response

Please provide us with an indicative (no commitment) response covering the following areas;

- Is the NMC's proposition likely to be of interest?
- In relation to the OSCE facility (lot 1), do you have an existing facility that simulates a clinical environment?
- We anticipate the OSCE facility opening in Q4 2016 – would you be able to accommodate this timescale?
- When we reach tender stage what information would assist you in submitting your detailed tender?
- What form of commercial model would make this opportunity an attractive proposition for you to bid?

If you would like to obtain further information about this opportunity, please express your interest by contacting the NMC no later than 27 May 2016.

We intend to complete the tender process by the end of August 2016

Contact the NMC for further details

Please email the procurement team:

procurement@nmc-uk.org