

Educating nurses, midwives and nursing associates

How you can get involved



More than
22,000 nurses
and midwives
trained in the
UK join the
professions
every year.

About 80 universities across the UK have to make sure education is always of a high quality and that students meet the high standards we set before they can practice in the UK. This leaflet sets out how we manage that, and how you can get involved.

Our role in education

How we check that universities and their courses are good enough

Education institutions (universities) wishing to deliver nursing and midwifery education have to apply to us and demonstrate that they can meet our standards. If they can, we give them permission to run a nursing or midwifery course.

We'll stay in touch to make sure these courses continue to meet our standards.

Where appropriate we share information with other regulators so that we can promote good practice and maintain patient safety.

How nurses and midwives are educated and trained

Nursing and midwifery are degree level professions, and this reflects how complex and responsible their roles are. Universities decide which students to accept onto courses, then they educate and train them against our standards. The students spend half their time in the classroom and half in health and care settings, where they can gain real experience of caring for people, patients and families.

During their course, students are assessed to see if they meet our standards, so at the end of their course, we can be assured that they are safe to join our register.

When you receive care from a student

Hands-on training for nurses, midwives and nursing associates is an essential part of their education. It helps them develop the skills that they need, put what they've learned in the classroom into practice, and be observed in a real health or care environment.

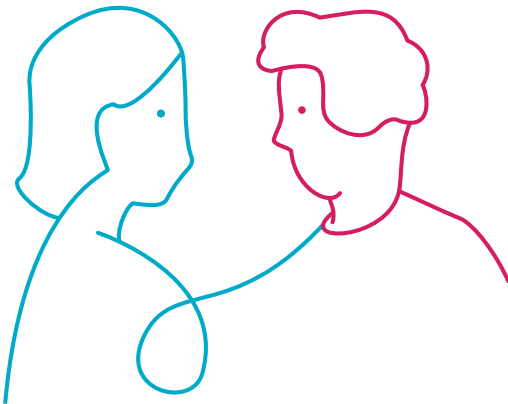
To make sure you're safe if students are involved in your care, the qualified staff in universities institutions and health and care settings are responsible for supervising what students do.

The supervisors teach, support, and give feedback about how they're doing.

You have the right to refuse if a student asks to observe or care for you.

Learning to provide good person centred care

For students to learn, they have to work with people who need care in different settings. In particular, they must be able to demonstrate the right values and behaviours and be compassionate and respectful.



Feedback is valued

Universities always welcome feedback on students. Listening to you and your feedback is something students have to demonstrate before they can qualify.

If you have a concern about a student nurse, midwife or nursing associate, it's always best to raise it at the time and place you're receiving the care, but it's possible to raise a concern later on if needed. All students have a supervisor you can talk to. If there's a serious concern about a student, the university will investigate and they could stop the student from continuing with their training.

Joining the register

When students qualify, their university will let us know that they have met our standards and are of good health and good character. They're then eligible to apply to join our register which entitles them to practise in the UK.

How you can get involved

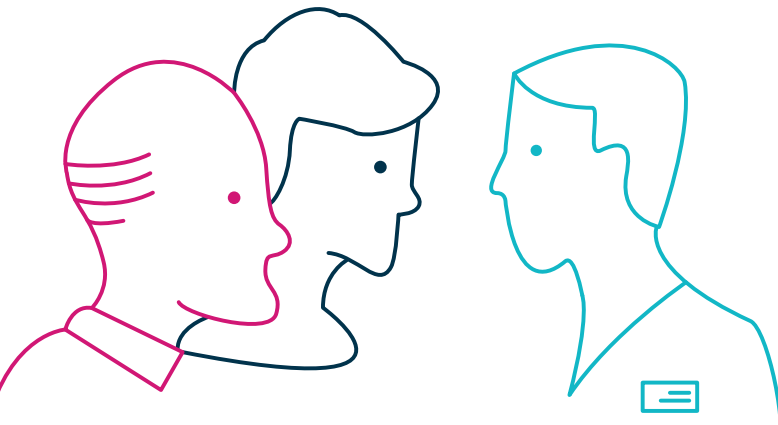
When the university develops its course

People's views should be taken into account when universities develop their courses. We check that they do this before we give them permission to run the course. It's one of the ways we make sure our standards are being met.

We'd like to meet the people and patients who've worked with the university when we visit it as part of the course approval process. If you want to be involved please [contact the university](#) or your local [patient advice and liaison service](#) (PALS) for more information.

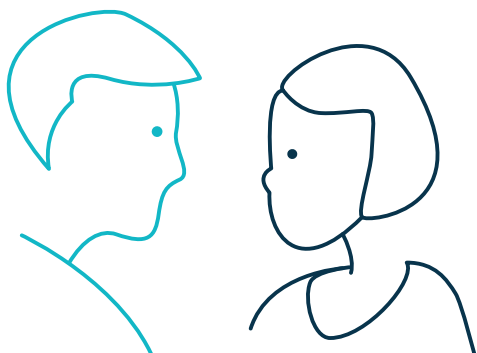
If you do get involved there are some questions that we'd like to ask. They might include:

- **Have you contributed to nursing and midwifery courses, and if so, how?**
- **Were you involved in the recruitment and selection of students, and if so how?**
- **How did you help the university to understand what matters to you when you receive care from students?**
- **What preparation and training was given to help you get involved to support the development of nursing and midwifery courses?**



When we monitor the university

We also visit universities as part of their regular monitoring. When we do that, we ask that the university shows us how they have sought views and received feedback from people and patients. We'd welcome the opportunity to speak to you when we visit the university, so do let those caring for you know that you're happy to talk to us.



Questions we might ask are:

- **Were you given the opportunity to give, and if required, withdraw your informed consent for a student observing or being involved in your care?**
- **Were you given the opportunity to provide feedback on any students who were involved in your care?**
- **If you raised concerns were you supported, and were you told the outcomes?**
- **Are you confident that students are supported to be open and honest with people?**

About us

We exist to protect the public by regulating nurses and midwives in the UK. We do this by setting standards of education, training, practice and behaviour, and maintaining a register of those who have been educated and trained and can show that they are able to meet our standards.

We have clear and transparent processes to investigate anyone on our register who falls short of our standards.

From January 2019, we'll regulate a new profession in England, nursing associates.